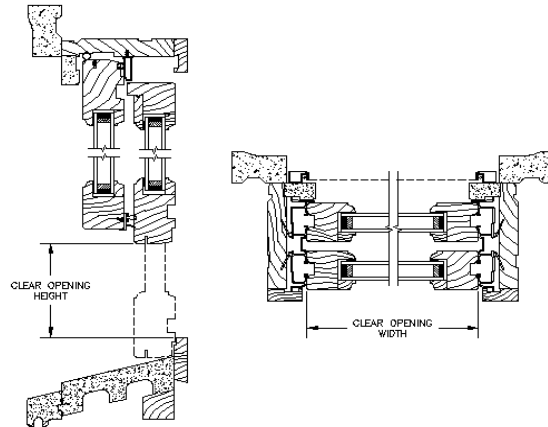


Revive Series

PRIMED DOUBLE HUNG SASH REPLACEMENT KIT

EGRESS, LITE & SCREEN MEASUREMENTS

| Egress, Lite and Vent Measurements | | | | | | | | | |
|------------------------------------|--------------|-----------------|----------------|-------------------------|---------------------|--------|-----------------|-------------|----------|
| Double Hung | | | | | | | | | |
| Size | Egress Width | Egress Height** | Sq. Ft. Egress | Egress Code Compliance* | | | Sq. Ft. Daylite | Screen Size | |
| | | | | U.S. | | Canada | | Width | Height |
| | | | | 5.0 ft ² | 5.7 ft ² | | | | |
| 1614 | 18.00 | 14.00 | 1.75 | - | - | - | 2.68 | 19 7/8 | 34 13/16 |
| 1616 | 18.00 | 16.00 | 2.00 | - | - | - | 3.13 | 19 7/8 | 38 13/16 |
| 1620 | 18.00 | 20.00 | 2.50 | - | - | - | 3.96 | 19 7/8 | 46 13/16 |
| 1622 | 18.00 | 22.00 | 2.75 | - | - | - | 4.38 | 19 7/8 | 50 13/16 |
| 1624 | 18.00 | 24.00 | 3.00 | - | - | - | 4.79 | 19 7/8 | 54 13/16 |
| 1626 | 18.00 | 26.00 | 3.25 | - | - | - | 5.21 | 19 7/8 | 58 13/16 |
| 1628 | 18.00 | 28.00 | 3.50 | - | - | - | 5.63 | 19 7/8 | 62 13/16 |
| 1630 | 18.00 | 30.00 | 3.75 | - | - | - | 6.04 | 19 7/8 | 66 13/16 |
| 1632 | 18.00 | 32.00 | 4.00 | - | - | Y | 6.46 | 19 7/8 | 70 13/16 |
| 1634 | 18.00 | 34.00 | 4.25 | - | - | Y | 6.88 | 19 7/8 | 74 13/16 |
| 1636 | 18.00 | 36.00 | 4.50 | - | - | Y | 7.29 | 19 7/8 | 78 13/16 |
| 2014 | 22.00 | 14.00 | 2.14 | - | - | - | 3.40 | 23 7/8 | 34 13/16 |
| 2016 | 22.00 | 16.00 | 2.44 | - | - | - | 3.96 | 23 7/8 | 38 13/16 |
| 2020 | 22.00 | 20.00 | 3.06 | - | - | - | 5.01 | 23 7/8 | 46 13/16 |
| 2022 | 22.00 | 22.00 | 3.36 | - | - | - | 5.54 | 23 7/8 | 50 13/16 |
| 2024 | 22.00 | 24.00 | 3.67 | - | - | - | 6.07 | 23 7/8 | 54 13/16 |
| 2026 | 22.00 | 26.00 | 3.97 | - | - | Y | 6.60 | 23 7/8 | 58 13/16 |
| 2028 | 22.00 | 28.00 | 4.28 | - | - | Y | 7.13 | 23 7/8 | 62 13/16 |
| 2030 | 22.00 | 30.00 | 4.58 | - | - | Y | 7.65 | 23 7/8 | 66 13/16 |
| 2032 | 22.00 | 32.00 | 4.89 | - | - | Y | 8.18 | 23 7/8 | 70 13/16 |
| 2034 | 22.00 | 34.00 | 5.19 | Y | - | Y | 8.71 | 23 7/8 | 74 13/16 |
| 2036 | 22.00 | 36.00 | 5.50 | Y | - | Y | 9.24 | 23 7/8 | 78 13/16 |
| 2414 | 26.00 | 14.00 | 2.53 | - | - | - | 4.12 | 27 7/8 | 34 13/16 |
| 2416 | 26.00 | 16.00 | 2.89 | - | - | - | 4.79 | 27 7/8 | 38 13/16 |
| 2420 | 26.00 | 20.00 | 3.61 | - | - | - | 6.07 | 27 7/8 | 46 13/16 |
| 2422 | 26.00 | 22.00 | 3.97 | - | - | Y | 6.71 | 27 7/8 | 50 13/16 |
| 2424 | 26.00 | 24.00 | 4.33 | - | - | Y | 7.35 | 27 7/8 | 54 13/16 |
| 2426 | 26.00 | 26.00 | 4.69 | - | - | Y | 7.99 | 27 7/8 | 58 13/16 |
| 2428 | 26.00 | 28.00 | 5.06 | Y | - | Y | 8.63 | 27 7/8 | 62 13/16 |
| 2430 | 26.00 | 30.00 | 5.42 | Y | - | Y | 9.26 | 27 7/8 | 66 13/16 |
| 2432 | 26.00 | 32.00 | 5.78 | Y | Y | Y | 9.90 | 27 7/8 | 70 13/16 |
| 2434 | 26.00 | 34.00 | 6.14 | Y | Y | Y | 10.54 | 27 7/8 | 74 13/16 |
| 2436 | 26.00 | 36.00 | 6.50 | Y | Y | Y | 11.18 | 27 7/8 | 78 13/16 |



| Egress Conversions | |
|--------------------|------------|
| Width | Glass + 2" |
| Height | Glass |

*** Egress Code Compliance Terminology**

- Y Meets Code
- Does Not Meet Code

| Code Requirements | Min Width | Min Height | Min Area |
|-------------------|-----------|------------|----------|
| U.S. | 20" | 24" | 5.7 |
| U.S. Grade Floor | 20" | 24" | 5.0 |
| Canada | 15" | 15" | 3.77 |

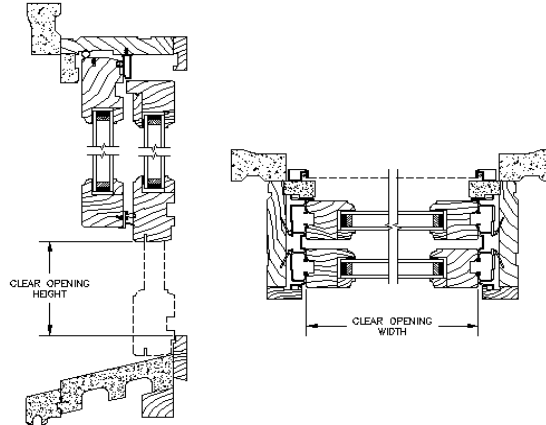
** For DP Upgrade units:
 Subtract 1/2" from Egress Height
 Egress Width does not change
 To get sq.ft: Multiply (Width x Height) / 144

Revive Series

PRIMED DOUBLE HUNG SASH REPLACEMENT KIT

EGRESS, LITE & SCREEN MEASUREMENTS

| Egress, Lite and Vent Measurements | | | | | | | | | | |
|------------------------------------|--------------|-----------------|----------------|-------------------------|---------------------|--------|-----------------|-------------|----------|--|
| Double Hung | | | | | | | | | | |
| Size | Egress Width | Egress Height** | Sq. Ft. Egress | Egress Code Compliance* | | | Sq. Ft. Daylite | Screen Size | | |
| | | | | U.S. | | Canada | | Width | Height | |
| | | | | 5.0 ft ² | 5.7 ft ² | | | | | |
| 2614 | 28.00 | 14.00 | 2.72 | - | - | - | 4.51 | 29 7/8 | 34 13/16 | |
| 2616 | 28.00 | 16.00 | 3.11 | - | - | - | 5.21 | 29 7/8 | 38 13/16 | |
| 2620 | 28.00 | 20.00 | 3.89 | - | - | Y | 6.60 | 29 7/8 | 46 13/16 | |
| 2622 | 28.00 | 22.00 | 4.28 | - | - | Y | 7.29 | 29 7/8 | 50 13/16 | |
| 2624 | 28.00 | 24.00 | 4.67 | - | - | Y | 7.99 | 29 7/8 | 54 13/16 | |
| 2626 | 28.00 | 26.00 | 5.06 | Y | - | Y | 8.68 | 29 7/8 | 58 13/16 | |
| 2628 | 28.00 | 28.00 | 5.44 | Y | - | Y | 9.38 | 29 7/8 | 62 13/16 | |
| 2630 | 28.00 | 30.00 | 5.83 | Y | Y | Y | 10.07 | 29 7/8 | 66 13/16 | |
| 2632 | 28.00 | 32.00 | 6.22 | Y | Y | Y | 10.76 | 29 7/8 | 70 13/16 | |
| 2634 | 28.00 | 34.00 | 6.61 | Y | Y | Y | 11.46 | 29 7/8 | 74 13/16 | |
| 2636 | 28.00 | 36.00 | 7.00 | Y | Y | Y | 12.15 | 29 7/8 | 78 13/16 | |
| 2814 | 30.00 | 14.00 | 2.92 | - | - | - | 4.80 | 31 7/8 | 34 13/16 | |
| 2816 | 30.00 | 16.00 | 3.33 | - | - | - | 5.63 | 31 7/8 | 38 13/16 | |
| 2820 | 30.00 | 20.00 | 4.17 | - | - | Y | 7.13 | 31 7/8 | 46 13/16 | |
| 2822 | 30.00 | 22.00 | 4.58 | - | - | Y | 7.88 | 31 7/8 | 50 13/16 | |
| 2824 | 30.00 | 24.00 | 5.00 | Y | - | Y | 8.63 | 31 7/8 | 54 13/16 | |
| 2826 | 30.00 | 26.00 | 5.42 | Y | - | Y | 9.38 | 31 7/8 | 58 13/16 | |
| 2828 | 30.00 | 28.00 | 5.83 | Y | Y | Y | 10.13 | 31 7/8 | 62 13/16 | |
| 2830 | 30.00 | 30.00 | 6.25 | Y | Y | Y | 10.88 | 31 7/8 | 66 13/16 | |
| 2832 | 30.00 | 32.00 | 6.67 | Y | Y | Y | 11.63 | 31 7/8 | 70 13/16 | |
| 2834 | 30.00 | 34.00 | 7.08 | Y | Y | Y | 12.38 | 31 7/8 | 74 13/16 | |
| 2836 | 30.00 | 36.00 | 7.50 | Y | Y | Y | 13.13 | 31 7/8 | 78 13/16 | |
| 3014 | 32.00 | 14.00 | 3.11 | - | - | - | 5.24 | 33 7/8 | 34 13/16 | |
| 3016 | 32.00 | 16.00 | 3.56 | - | - | Y | 6.04 | 33 7/8 | 38 13/16 | |
| 3020 | 32.00 | 20.00 | 4.44 | - | - | Y | 7.65 | 33 7/8 | 46 13/16 | |
| 3022 | 32.00 | 22.00 | 4.89 | - | - | Y | 8.46 | 33 7/8 | 50 13/16 | |
| 3024 | 32.00 | 24.00 | 5.33 | Y | - | Y | 9.26 | 33 7/8 | 54 13/16 | |
| 3026 | 32.00 | 26.00 | 5.78 | Y | Y | Y | 10.07 | 33 7/8 | 58 13/16 | |
| 3028 | 32.00 | 28.00 | 6.22 | Y | Y | Y | 10.88 | 33 7/8 | 62 13/16 | |
| 3030 | 32.00 | 30.00 | 6.67 | Y | Y | Y | 11.68 | 33 7/8 | 66 13/16 | |
| 3032 | 32.00 | 32.00 | 7.11 | Y | Y | Y | 12.49 | 33 7/8 | 70 13/16 | |
| 3034 | 32.00 | 34.00 | 7.56 | Y | Y | Y | 13.29 | 33 7/8 | 74 13/16 | |
| 3036 | 32.00 | 36.00 | 8.00 | Y | Y | Y | 14.10 | 33 7/8 | 78 13/16 | |
| 3214 | 34.00 | 14.00 | 3.31 | - | - | - | 5.51 | 35 7/8 | 34 13/16 | |
| 3216 | 34.00 | 16.00 | 3.78 | - | - | Y | 6.46 | 35 7/8 | 38 13/16 | |
| 3220 | 34.00 | 20.00 | 4.72 | - | - | Y | 8.18 | 35 7/8 | 46 13/16 | |
| 3222 | 34.00 | 22.00 | 5.19 | - | - | Y | 9.04 | 35 7/8 | 50 13/16 | |
| 3224 | 34.00 | 24.00 | 5.67 | Y | - | Y | 9.90 | 35 7/8 | 54 13/16 | |
| 3226 | 34.00 | 26.00 | 6.14 | Y | Y | Y | 10.76 | 35 7/8 | 58 13/16 | |
| 3228 | 34.00 | 28.00 | 6.61 | Y | Y | Y | 11.63 | 35 7/8 | 62 13/16 | |
| 3230 | 34.00 | 30.00 | 7.08 | Y | Y | Y | 12.49 | 35 7/8 | 66 13/16 | |
| 3232 | 34.00 | 32.00 | 7.56 | Y | Y | Y | 13.35 | 35 7/8 | 70 13/16 | |
| 3234 | 34.00 | 34.00 | 8.03 | Y | Y | Y | 14.21 | 35 7/8 | 74 13/16 | |
| 3236 | 34.00 | 36.00 | 8.50 | Y | Y | Y | 15.07 | 35 7/8 | 78 13/16 | |



| Egress Conversions | |
|--------------------|------------|
| Width | Glass + 2" |
| Height | Glass |

*** Egress Code Compliance Terminology**

- Y Meets Code
- Does Not Meet Code

| Code Requirements | Min Width | Min Height | Min Area |
|-------------------|-----------|------------|----------|
| U.S. | 20" | 24" | 5.7 |
| U.S. Grade Floor | 20" | 24" | 5.0 |
| Canada | 15" | 15" | 3.77 |

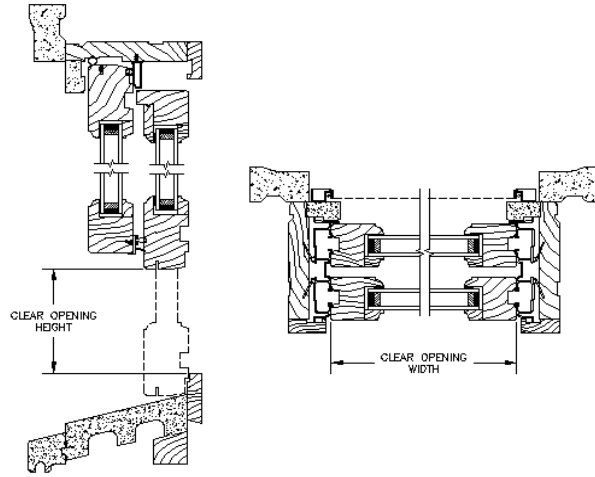
** For DP Upgrade units:
 Subtract 1/2" from Egress Height
 Egress Width does not change
 To get sq.ft: Multiply (Width x Height) / 144

Revive Series

PRIMED DOUBLE HUNG SASH REPLACEMENT KIT

EGRESS, LITE & SCREEN MEASUREMENTS

| Egress, Lite and Vent Measurements | | | | | | | | | | |
|------------------------------------|--------------|-----------------|----------------|-------------------------|---------------------|--------|-----------------|-------------|----------|--|
| Double Hung | | | | | | | | | | |
| Size | Egress Width | Egress Height** | Sq. Ft. Egress | Egress Code Compliance* | | | Sq. Ft. Daylite | Screen Size | | |
| | | | | U.S. | | Canada | | Width | Height | |
| | | | | 5.0 ft ² | 5.7 ft ² | | | | | |
| 3614 | 38.00 | 14.00 | 3.69 | - | - | - | 6.23 | 39 7/8 | 34 13/16 | |
| 3616 | 38.00 | 16.00 | 4.22 | - | - | Y | 7.29 | 39 7/8 | 38 13/16 | |
| 3620 | 38.00 | 20.00 | 5.28 | - | - | Y | 9.24 | 39 7/8 | 46 13/16 | |
| 3622 | 38.00 | 22.00 | 5.81 | - | - | Y | 10.21 | 39 7/8 | 50 13/16 | |
| 3624 | 38.00 | 24.00 | 6.33 | Y | Y | Y | 11.18 | 39 7/8 | 54 13/16 | |
| 3626 | 38.00 | 26.00 | 6.86 | Y | Y | Y | 12.15 | 39 7/8 | 58 13/16 | |
| 3628 | 38.00 | 28.00 | 7.39 | Y | Y | Y | 13.13 | 39 7/8 | 62 13/16 | |
| 3630 | 38.00 | 30.00 | 7.92 | Y | Y | Y | 14.1 | 39 7/8 | 66 13/16 | |
| 3632 | 38.00 | 32.00 | 8.44 | Y | Y | Y | 15.07 | 39 7/8 | 70 13/16 | |
| 3634 | 38.00 | 34.00 | 8.97 | Y | Y | Y | 16.04 | 39 7/8 | 74 13/16 | |
| 3636 | 38.00 | 36.00 | 9.50 | Y | Y | Y | 17.01 | 39 7/8 | 78 13/16 | |
| 4014 | 42.00 | 14.00 | 4.08 | - | - | - | 7.02 | 43 7/8 | 34 13/16 | |
| 4016 | 42.00 | 16.00 | 4.67 | - | - | Y | 8.13 | 43 7/8 | 38 13/16 | |
| 4020 | 42.00 | 20.00 | 5.83 | - | - | Y | 10.29 | 43 7/8 | 46 13/16 | |
| 4022 | 42.00 | 22.00 | 6.42 | - | - | Y | 11.38 | 43 7/8 | 50 13/16 | |
| 4024 | 42.00 | 24.00 | 7.00 | Y | Y | Y | 12.46 | 43 7/8 | 54 13/16 | |
| 4026 | 42.00 | 26.00 | 7.58 | Y | Y | Y | 13.54 | 43 7/8 | 58 13/16 | |
| 4028 | 42.00 | 28.00 | 8.17 | Y | Y | Y | 14.63 | 43 7/8 | 62 13/16 | |
| 4030 | 42.00 | 30.00 | 8.75 | Y | Y | Y | 15.71 | 43 7/8 | 66 13/16 | |
| 4032 | 42.00 | 32.00 | 9.33 | Y | Y | Y | 16.79 | 43 7/8 | 70 13/16 | |
| 4034 | 42.00 | 34.00 | 9.92 | Y | Y | Y | 17.88 | 43 7/8 | 74 13/16 | |
| 4036 | 42.00 | 36.00 | 10.50 | Y | Y | Y | 18.96 | 43 7/8 | 78 13/16 | |
| Cottage | | | | | | | | | | |
| 162436 | 18.00 | 24.00 | 3.00 | - | - | - | 6.04 | 19 7/8 | 66 13/16 | |
| 202436 | 22.00 | 24.00 | 3.67 | - | - | - | 7.65 | 23 7/8 | 66 13/16 | |
| 242436 | 26.00 | 24.00 | 4.33 | - | - | Y | 9.26 | 27 7/8 | 66 13/16 | |
| 262436 | 28.00 | 24.00 | 4.67 | - | - | Y | 10.069 | 29 7/8 | 66 13/16 | |
| 282436 | 30.00 | 24.00 | 5.00 | Y | - | Y | 10.88 | 31 7/8 | 66 13/16 | |
| 302436 | 32.00 | 24.00 | 5.33 | Y | - | Y | 11.681 | 33 7/8 | 66 13/16 | |
| 322436 | 34.00 | 24.00 | 5.67 | Y | Y | Y | 12.49 | 35 7/8 | 66 13/16 | |
| 362436 | 38.00 | 24.00 | 6.33 | Y | Y | Y | 14.10 | 39 7/8 | 66 13/16 | |
| Oriel | | | | | | | | | | |
| 163624 | 18.00 | 24.00 | 3.00 | - | - | - | 6.04 | 19 7/8 | 66 13/16 | |
| 203624 | 22.00 | 24.00 | 3.67 | - | - | - | 7.65 | 23 7/8 | 66 13/16 | |
| 243624 | 26.00 | 24.00 | 4.33 | - | - | Y | 9.26 | 27 7/8 | 66 13/16 | |
| 263624 | 28.00 | 24.00 | 4.67 | - | - | Y | 10.069 | 29 7/8 | 66 13/16 | |
| 283624 | 30.00 | 24.00 | 5.00 | Y | - | Y | 10.88 | 31 7/8 | 66 13/16 | |
| 303624 | 32.00 | 24.00 | 5.33 | Y | - | Y | 11.681 | 33 7/8 | 66 13/16 | |
| 323624 | 34.00 | 24.00 | 5.67 | Y | Y | Y | 12.49 | 35 7/8 | 66 13/16 | |
| 363624 | 38.00 | 24.00 | 6.33 | Y | Y | Y | 14.10 | 39 7/8 | 66 13/16 | |



| Egress Conversions - Standard | |
|-------------------------------|------------|
| Width | Glass + 2" |
| Height | Glass |

| Egress Conversions - Cottage | |
|------------------------------|-------------|
| Width | Glass + 2" |
| Height | Glass (Top) |

| Egress Conversions - Oriel | |
|----------------------------|----------------|
| Width | Glass + 2" |
| Height | Glass (Bottom) |

*** Egress Code Compliance Terminology**

- Y Meets Code
- Does Not Meet Code

| Code Requirements | Min Width | Min Height | Min Area |
|-------------------|-----------|------------|----------|
| U.S. | 20" | 24" | 5.7 |
| U.S. Grade Floor | 20" | 24" | 5.0 |
| Canada | 15" | 15" | 3.77 |

** For DP Upgrade units:
 Subtract 1/2" from Egress Height
 Egress Width does not change
 To get sq.ft: Multiply (Width x Height) / 144