








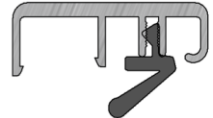

Quad Door Panel Astragal Installation Instructions

Equipment Needed

- Hammer
- Measuring Tape
- Block of Wood
- Screw Driver

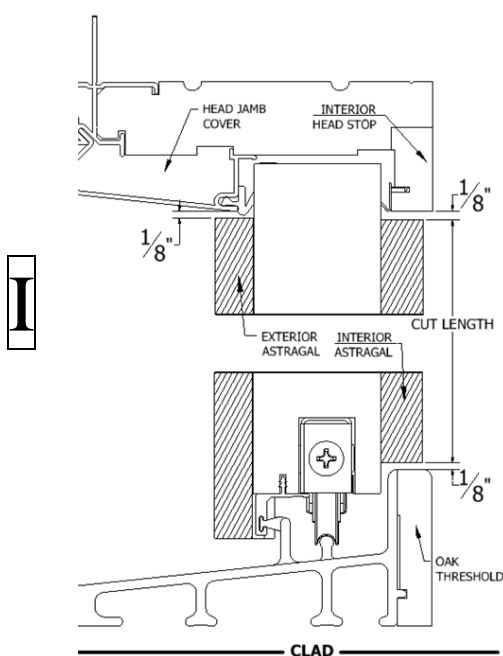
Parts List

- Interior Astragal (1) : Wood 
- Exterior Astragal (1) : Clad – Aluminum  Prime – Wood 
- #8 x 1 1/2" Flat Head Screws (12) 

PROFILE	FINISH	CALL OUT	PART #
	PINE	6-10	220168
	PINE	8-0	220169
	ALDER	8-0-A	220169-A
	FIR	8-0-F	220169-F
INTERIOR ASTRAGAL WEATHERSTRIP			8046-1
	MILL	8'4"	8249-1
	EXTERIOR ASTRAGAL WEATHERSTRIP		2384100
	INTERIOR ASTRAGAL SCREWS	#8 x 1 1/2" FLAT HEAD	8091

Note: Astragal instructions should occur after adjusting rollers on door panels

Adjusting rollers: Refer to Step 9: Completing the Installation and the Care and Use guide located at www.windsorwindows.com for further information pertaining to hardware adjustments

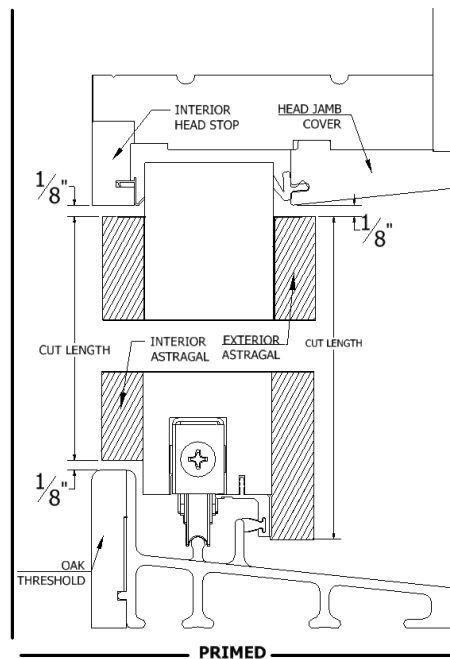


INTERIOR ASTRAGAL

1. Interior Astragal is Pre-Cut to length

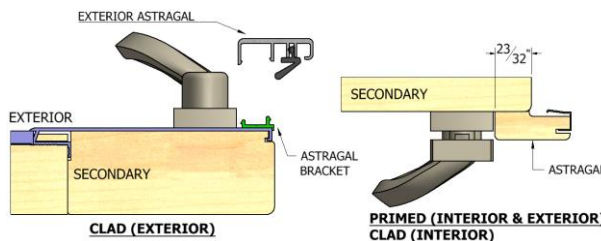
EXTERIOR ASTRAGAL

1. Exterior Astragal is Pre-Cut to length



CLAD (EXTERIOR)

1. Place the Exterior Astragal over the Astragal Bracket in the location shown in Section I.
2. Starting from the bottom, working your way to the top, place a block of wood on the face of the Exterior Astragal and tap with a hammer until it snaps in place.



PRIMED / CLAD (INTERIOR)

1. Place the wooden astragal in vertical location shown in Section I.
2. Align the astragal 3/4" from the edge of the stile (Shown on left).
3. Secure astragal by following Section 3, shown below.

SECURING ASTRAGAL

1. Position the astragal as stated in Sections I and II.
2. Using #8 x 1 1/2" flat head screws found in the hardware bag, install screws 10" apart along the length of the astragal 3/8" from the edge of the astragal (Shown on right).

