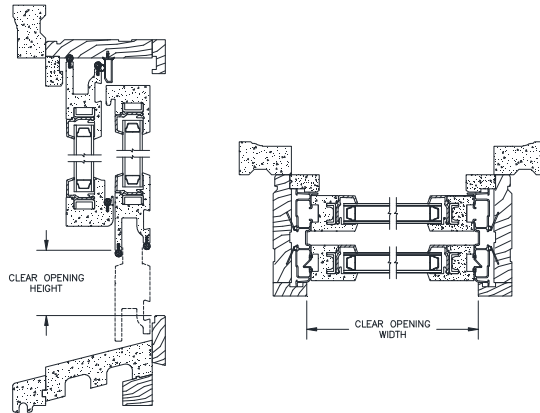


Revive Series

CELLULAR PVC DOUBLE HUNG SASH REPLACEMENT KITS

EGRESS, LITE & SCREEN MEASUREMENTS

Egress, Lite and Vent Measurements								
Double Hung								
Size	Egress Width	Egress Height**	Sq. Ft. Egress	Egress Code Compliance*			Screen Size	
				U.S.		Canada	Width	Height
				5.0 ft ²	5.7 ft ²			
1614	17.88	13.50	1.68	-	-	-	19 7/8	34 13/16
1616	17.88	15.50	1.92	-	-	-	19 7/8	38 13/16
1620	17.88	19.50	2.42	-	-	-	19 7/8	46 13/16
1622	17.88	21.50	2.67	-	-	-	19 7/8	50 13/16
1624	17.88	23.50	2.92	-	-	-	19 7/8	54 13/16
1626	17.88	25.50	3.17	-	-	-	19 7/8	58 13/16
1628	17.88	27.50	3.41	-	-	-	19 7/8	62 13/16
1630	17.88	29.50	3.66	-	-	-	19 7/8	66 13/16
1632	17.88	31.50	3.91	-	-	Y	19 7/8	70 13/16
1634	17.88	33.50	4.16	-	-	Y	19 7/8	74 13/16
1636	17.88	35.50	4.41	-	-	Y	19 7/8	78 13/16
2014	21.88	13.50	2.05	-	-	-	23 7/8	34 13/16
2016	21.88	15.50	2.35	-	-	-	23 7/8	38 13/16
2020	21.88	19.50	2.96	-	-	-	23 7/8	46 13/16
2022	21.88	21.50	3.27	-	-	-	23 7/8	50 13/16
2024	21.88	23.50	3.57	-	-	-	23 7/8	54 13/16
2026	21.88	25.50	3.87	-	-	Y	23 7/8	58 13/16
2028	21.88	27.50	4.18	-	-	Y	23 7/8	62 13/16
2030	21.88	29.50	4.48	-	-	Y	23 7/8	66 13/16
2032	21.88	31.50	4.79	-	-	Y	23 7/8	70 13/16
2034	21.88	33.50	5.09	Y	-	Y	23 7/8	74 13/16
2036	21.88	35.50	5.39	Y	-	Y	23 7/8	78 13/16
2414	25.88	13.50	2.43	-	-	-	27 7/8	34 13/16
2416	25.88	15.50	2.79	-	-	-	27 7/8	38 13/16
2420	25.88	19.50	3.50	-	-	-	27 7/8	46 13/16
2422	25.88	21.50	3.86	-	-	Y	27 7/8	50 13/16
2424	25.88	23.50	4.22	-	-	Y	27 7/8	54 13/16
2426	25.88	25.50	4.58	-	-	Y	27 7/8	58 13/16
2428	25.88	27.50	4.94	-	-	Y	27 7/8	62 13/16
2430	25.88	29.50	5.30	Y	-	Y	27 7/8	66 13/16
2432	25.88	31.50	5.66	Y	-	Y	27 7/8	70 13/16
2434	25.88	33.50	6.02	Y	Y	Y	27 7/8	74 13/16
2436	25.88	35.50	6.38	Y	Y	Y	27 7/8	78 13/16
2614	27.88	13.50	2.61	-	-	-	29 7/8	34 13/16
2616	27.88	15.50	3.00	-	-	-	29 7/8	38 13/16
2620	27.88	19.50	3.77	-	-	Y	29 7/8	46 13/16
2622	27.88	21.50	4.16	-	-	Y	29 7/8	50 13/16
2624	27.88	23.50	4.55	-	-	Y	29 7/8	54 13/16
2626	27.88	25.50	4.94	-	-	Y	29 7/8	58 13/16
2628	27.88	27.50	5.32	Y	-	Y	29 7/8	62 13/16
2630	27.88	29.50	5.71	Y	Y	Y	29 7/8	66 13/16
2632	27.88	31.50	6.10	Y	Y	Y	29 7/8	70 13/16
2634	27.88	33.50	6.48	Y	Y	Y	29 7/8	74 13/16
2636	27.88	35.50	6.87	Y	Y	Y	29 7/8	78 13/16



Egress Conversions	
Width	Glass + 1.875"
Height	Glass - 0.5"

* Egress Code Compliance Terminology

- Y Meets Code
- Does Not Meet Code

Code Requirements	Min Width	Min Height	Min Area
U.S.	20"	24"	5.7
U.S. Grade Floor	20"	24"	5.0
Canada	15"	15"	3.77

Screen Conversions	
Width	Glass + 3.875"
Height	Glass + Glass + 6.813"

** For DP Upgrade units:

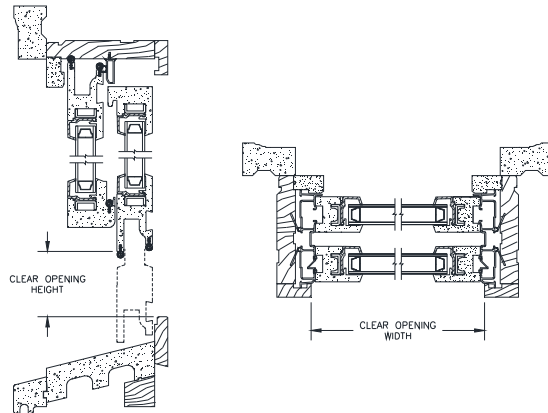
- Subtract 1/2" from Egress Height
- Egress Width does not change
- To get sq.ft: Multiply (Width x Height) / 144

Revive Series

CELLULAR PVC DOUBLE HUNG SASH REPLACEMENT KITS

EGRESS, LITE & SCREEN MEASUREMENTS

Egress, Lite and Vent Measurements									
Double Hung									
Size	Egress Width	Egress Height**	Sq. Ft. Egress	Egress Code Compliance*			Screen Size		
				U.S.		Canada	Width	Height	
				5.0 ft ²	5.7 ft ²				
2814	29.88	13.50	2.80	-	-	-	31 7/8	34 13/16	
2816	29.88	15.50	3.22	-	-	-	31 7/8	38 13/16	
2820	29.88	19.50	4.05	-	-	Y	31 7/8	46 13/16	
2822	29.88	21.50	4.46	-	-	Y	31 7/8	50 13/16	
2824	29.88	23.50	4.88	-	-	Y	31 7/8	54 13/16	
2826	29.88	25.50	5.29	Y	-	Y	31 7/8	58 13/16	
2828	29.88	27.50	5.71	Y	Y	Y	31 7/8	62 13/16	
2830	29.88	29.50	6.12	Y	Y	Y	31 7/8	66 13/16	
2832	29.88	31.50	6.54	Y	Y	Y	31 7/8	70 13/16	
2834	29.88	33.50	6.95	Y	Y	Y	31 7/8	74 13/16	
2836	29.88	35.50	7.37	Y	Y	Y	31 7/8	78 13/16	
3014	31.88	13.50	2.99	-	-	-	33 7/8	34 13/16	
3016	31.88	15.50	3.43	-	-	-	33 7/8	38 13/16	
3020	31.88	19.50	4.32	-	-	Y	33 7/8	46 13/16	
3022	31.88	21.50	4.76	-	-	Y	33 7/8	50 13/16	
3024	31.88	23.50	5.20	-	-	Y	33 7/8	54 13/16	
3026	31.88	25.50	5.64	Y	-	Y	33 7/8	58 13/16	
3028	31.88	27.50	6.09	Y	Y	Y	33 7/8	62 13/16	
3030	31.88	29.50	6.53	Y	Y	Y	33 7/8	66 13/16	
3032	31.88	31.50	6.97	Y	Y	Y	33 7/8	70 13/16	
3034	31.88	33.50	7.42	Y	Y	Y	33 7/8	74 13/16	
3036	31.88	35.50	7.86	Y	Y	Y	33 7/8	78 13/16	
3214	33.88	13.50	3.18	-	-	-	35 7/8	34 13/16	
3216	33.88	15.50	3.65	-	-	-	35 7/8	38 13/16	
3220	33.88	19.50	4.59	-	-	Y	35 7/8	46 13/16	
3222	33.88	21.50	5.06	-	-	Y	35 7/8	50 13/16	
3224	33.88	23.50	5.53	-	-	Y	35 7/8	54 13/16	
3226	33.88	25.50	6.00	Y	Y	Y	35 7/8	58 13/16	
3228	33.88	27.50	6.47	Y	Y	Y	35 7/8	62 13/16	
3230	33.88	29.50	6.94	Y	Y	Y	35 7/8	66 13/16	
3232	33.88	31.50	7.41	Y	Y	Y	35 7/8	70 13/16	
3234	33.88	33.50	7.88	Y	Y	Y	35 7/8	74 13/16	
3236	33.88	35.50	8.35	Y	Y	Y	35 7/8	78 13/16	



Egress Conversions	
Width	Glass + 1.875"
Height	Glass - 0.5"

*** Egress Code Compliance Terminology**

- Y Meets Code
- Does Not Meet Code

Code Requirements	Min Width	Min Height	Min Area
U.S.	20"	24"	5.7
U.S. Grade Floor	20"	24"	5.0
Canada	15"	15"	3.77

Screen Conversions	
Width	Glass + 3.875"
Height	Glass + Glass + 6.813"

** For DP Upgrade units:
 Subtract 1/2" from Egress Height
 Egress Width does not change
 To get sq.ft: Multiply (Width x Height) / 144

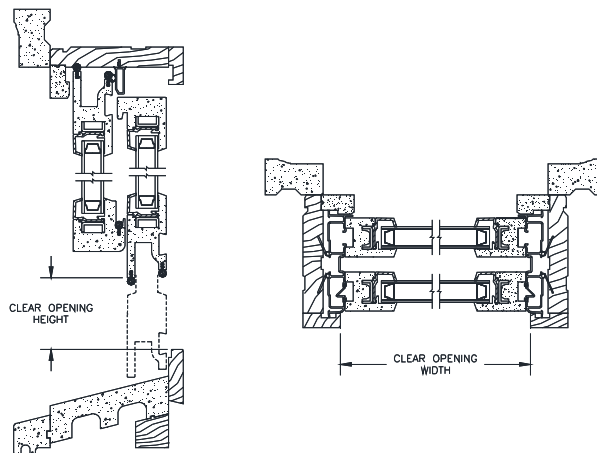
Revive Series

CELLULAR PVC DOUBLE HUNG SASH REPLACEMENT KITS

EGRESS, LITE & SCREEN MEASUREMENTS

Egress, Lite and Vent Measurements									
Double Hung									
Size	Egress Width	Egress Height**	Sq. Ft. Egress	Egress Code Compliance*			Screen Size		
				U.S.		Canada	Width	Height	
				5.0 ft ²	5.7 ft ²				
3614	37.88	13.50	3.55	-	-	-	39 7/8	34 13/16	
3616	37.88	15.50	4.08	-	-	Y	39 7/8	38 13/16	
3620	37.88	19.50	5.13	-	-	Y	39 7/8	46 13/16	
3622	37.88	21.50	5.65	-	-	Y	39 7/8	50 13/16	
3624	37.88	23.50	6.18	-	-	Y	39 7/8	54 13/16	
3626	37.88	25.50	6.71	Y	Y	Y	39 7/8	58 13/16	
3628	37.88	27.50	7.23	Y	Y	Y	39 7/8	62 13/16	
3630	37.88	29.50	7.76	Y	Y	Y	39 7/8	66 13/16	
3632	37.88	31.50	8.29	Y	Y	Y	39 7/8	70 13/16	
3634	37.88	33.50	8.81	Y	Y	Y	39 7/8	74 13/16	
3636	37.88	35.50	9.34	Y	Y	Y	39 7/8	78 13/16	
Cottage									
162436	17.88	23.50	2.92	-	-	-	19 7/8	66 13/16	
202436	21.88	23.50	3.57	-	-	-	23 7/8	66 13/16	
242436	25.88	23.50	4.22	-	-	Y	27 7/8	66 13/16	
262436	27.88	23.50	4.55	-	-	Y	29 7/8	66 13/16	
282436	29.88	23.50	4.88	-	-	Y	31 7/8	66 13/16	
302436	31.88	23.50	5.20	-	-	Y	33 7/8	66 13/16	
322436	33.88	23.50	5.53	-	-	Y	35 7/8	66 13/16	
362436	37.88	23.50	6.18	-	-	Y	39 7/8	66 13/16	
Oriel									
163624	17.88	23.50	2.92	-	-	-	19 7/8	66 13/16	
203624	21.88	23.50	3.57	-	-	-	23 7/8	66 13/16	
243624	25.88	23.50	4.22	-	-	Y	27 7/8	66 13/16	
263624	27.88	23.50	4.55	-	-	Y	29 7/8	66 13/16	
283624	29.88	23.50	4.88	-	-	Y	31 7/8	66 13/16	
303624	31.88	23.50	5.20	-	-	Y	33 7/8	66 13/16	
323624	33.88	23.50	5.53	-	-	Y	35 7/8	66 13/16	
363624	37.88	23.50	6.18	-	-	Y	39 7/8	66 13/16	

** For DP Upgrade units:
 Subtract 1/2" from Egress Height
 Egress Width does not change
 To get sq.ft: Multiply (Width x Height) / 144



Egress Conversions - Standard	
Width	Glass + 1.875"
Height	Glass - 0.5"

Egress Conversions - Cottage	
Width	Glass + 1.875"
Height	Glass - 0.5" (Top)

Egress Conversions - Oriel	
Width	Glass + 1.875"
Height	Glass - 0.5" (Bottom)

* Egress Code Compliance Terminology

- Y Meets Code
- Does Not Meet Code

Code Requirements	Min Width	Min Height	Min Area
U.S.	20"	24"	5.7
U.S. Grade Floor	20"	24"	5.0
Canada	15"	15"	3.77

Screen Conversions	
Width	Glass + 3.875"
Height	Glass + Glass + 6.813"