

Installation Guidelines



FOR PINNACLE SELECT INSWING & OUTSWING DOORS

Installer

- Read instructions completely before attempting installation. Failure to follow these guidelines will forfeit all warranties (written or implied). Windsor Windows & Doors will not be held responsible for any claims or damages resulting from installation.
- Always provide a copy of these instructions to the homeowner.
- Contact your architect or construction professional for installation into other building designs or construction methods.
- Structural support of the sill is required to support the entire sill width, and depth of the sill's interior edge, to the exterior nose of the sill extrusion. If the architect's details do not include this type of structural support, a structural support must be installed and flashed.
- Regional codes and environmental conditions may require installation that is different from these guidelines. It is your responsibility to ensure that local codes and ordinances are followed.

Warning

- ⚠ **Work Safe!** Always wear proper eye and hearing protection when installing or adjusting Windsor products. **Use Power Tools**
- ⚠ **Properly!** To avoid personal injury, always follow manufacturers' instructions for safe operation of power tools.
- ⚠ **Ladder Safety!** Working at elevated levels can be hazardous. Always use ladders and scaffolding properly. Consult manufacturers' guidelines for safe use of these types of equipment.

Important

- Windsor reserves the right to change the information contained in these guidelines without notice.
- Maintain a minimum of 1/4" between the door frame and any trim, siding or masonry.
- Use of Windsor products in barrier EIFS systems (synthetic stucco) is not recommended. To do so will forfeit all warranties (written or implied). Windsor Windows & Doors will not be held responsible for any claims or damages resulting from water infiltration.
- Steel fasteners will corrode when used with ACQ pressure treated lumber. Use corrosion resistant fasteners (such as stainless steel) when installing doors in or around these types of materials.
- Doors must be properly flashed and sealed around the perimeter.

Handling and Storage

- Always carry door panels upright. Do not carry flat! Doing so could result in damage to the panels.
- Do not store units outside.

ATTENTION! ARBITRATION AGREEMENT; JURY TRIAL WAIVER; CLASS ACTION WAIVER. By purchasing, installing, or using this product, you agree to arbitrate any dispute you may have with Windsor relating to your Windsor products, and to waive your rights to a jury trial and to participate in class-action or class-arbitration proceedings, relating to any such disputes. For more details, and to learn how **YOU CAN OPT OUT OF THIS ARBITRATION AGREEMENT AND THESE WAIVERS**, please go to [www.windsorwindows.com/support/Dispute Resolution](http://www.windsorwindows.com/support/Dispute%20Resolution).

Lead Paint and Existing Window or Door Disposal:

Before any remodel or renovation, make sure to identify any potential lead paint issues and take necessary steps to reduce the risk of lead contamination.

The U.S. Environmental Protection Agency (EPA) has issued a “Lead Renovation, Repair and Painting Rule (RRP)” for remodelers of older homes and buildings. This rule requires training and certification in lead-safe work practices for firms performing renovation, repair or painting on homes and child-occupied facilities built prior to 1978.

For more information regarding procedures for dealing with lead paint, please visit EPA’s website at www.epa.gov/lead.

When removing existing windows or doors, make sure to wear appropriate personal protective equipment. Extra precautions should be taken to protect others and property within the vicinity and below the removal window and surrounding components.

Consult with local waste authorities on the proper recycling or disposal of old window or door components.

Overview of Pinnacle Select Inswing & Outswing Doors

Inswing & Outswing doors are a popular choice for entryways as well as patio and deck applications. Select swing doors are available in single or two-panel configurations with a variety of handing options.

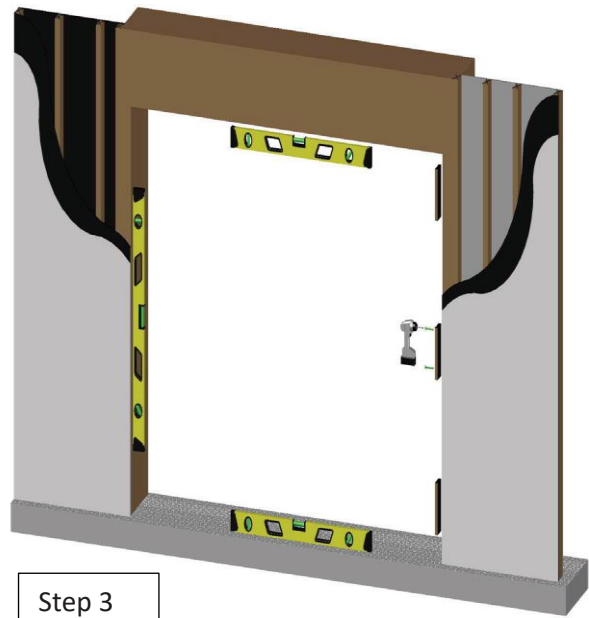
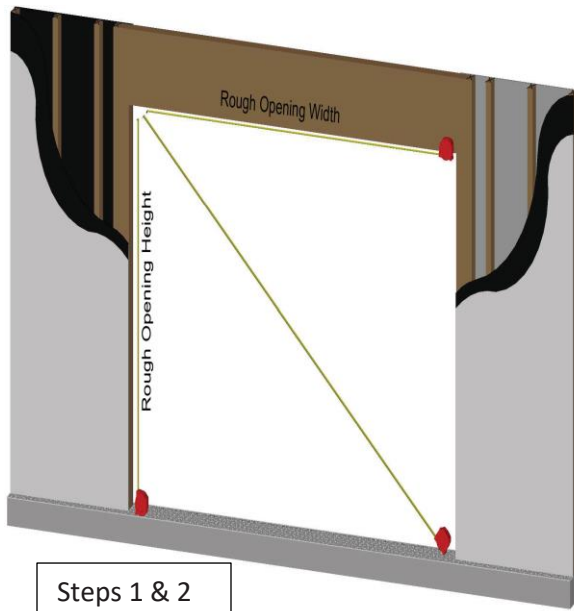
RECOMMENDED TOOLS (NOT SUPPLIED):

- Carpenter’s Level (Optional: Laser Level)
- Wrench or Ratchet
- Rubber Mallet
- Tape Measures
- Caulking Gun and Sealant
- Self-Leveling Epoxy
- Power Drill
- Impact Driver
- 3mm Allen Wrench

INCLUDED PARTS:

- Installation Screws
- #10-24 Machine Screws (Two Panel Doors only)

Part 1: Prepare the Opening



1. Prior to checking the dimensions for the systems, ensure that the opening is square and plumb at the size stated on your order.
2. Using a tape measure, check the height, width, and the dimension across the opening. The opening should be 1" larger than the assembled unit.

Note: Shimming & leveling the system properly is highly important, do not over or under shim.

3. Once you are sure that the frame fits properly in the opening, it is time to prepare the opening for the new system. If the opening needs to be shimmed, go ahead and apply the shims as necessary. There should still be at least 1/2" of clearance around the entire system
4. Check the entire opening to ensure that the opening is level and square. This is one of the most important steps and should not be skipped, to ensure proper operation of the new system.

Part 2: Frame Installation

1. Identify the exterior and interior of the door assembly. This will determine how the frame is inserted into the opening.
2. Frames come pre-assembled, with corners attached.
3. Position the frame into the opening.
4. Center the unit in the opening allowing equal shimming space on sides and head.



Part 3A: Single Panel Installation

Note: All single panels will be factory installed into the frame.

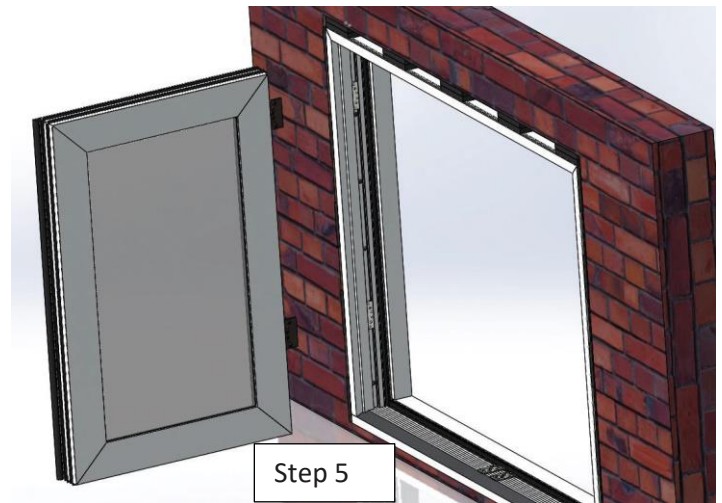
1. Swing the door open.
2. Support the door as it remains in the open position.
3. To secure the unit, insert shims into the gaps between the opening and the unit. Stack shims if necessary creating a tight fit. When allowable, fit shims in-between the pre-drilled holes.
4. Using the 4" installation screws provided, fasten the unit into the opening using the pre-drilled holes in the frame.
5. If additional fasteners are needed, pre-drill using a 3/16" diameter bit through the recessed channel in the aluminum unit after the unit has been secured with fasteners, it is important to double check the dimensions of the unit to make any final corrections in shimming. Make sure the threshold, side frames, and header are all straight and level before proceeding to the next step.
6. Proceed to Part 4 for adjustment.



Part 3B: Two Panel Installation

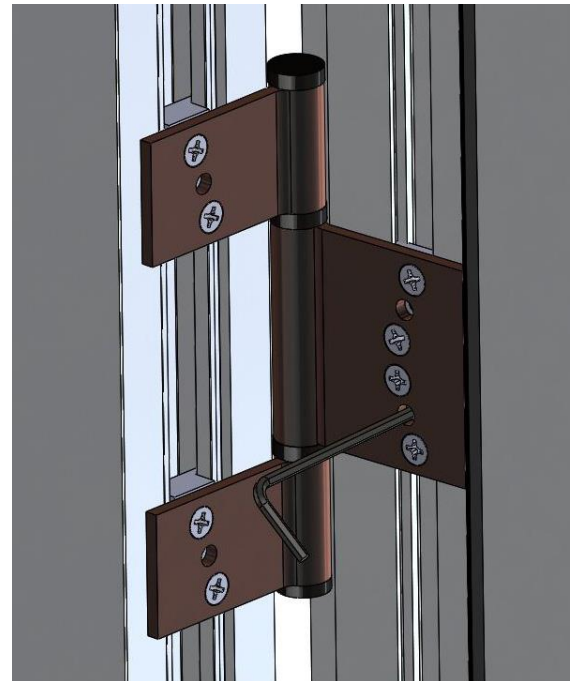
Note: Two Panel doors are installed into the frame during assembly but removed and shipped separately.

1. To secure the frame, insert shims into the gaps between the opening and the frame. Stack shims if necessary creating a tight fit. When allowable, fit shims underneath the pre-drilled holes on the unit.
2. Using the 4" installation screws provided, fasten the unit into the opening using the pre-drilled holes in the frame.
3. If additional fasteners are needed, pre-drill using a 3/16" diameter bit through the recessed channel in aluminum frame.
4. After the frame has been secured with fasteners, it is important to double check the dimensions of the frame to make any final corrections in shimming. Make sure the threshold, side frames, and header are all straight and level before proceeding to the next step.
5. Position the door perpendicular to the frame ("Open" position) and locate the joining hinge insert while supporting the panel open.
6. Begin to align the four countersunk through holes on the hinge leaf with the hinge insert.
7. Use the provided #10-24 machine screws to secure the hinge leaf onto the frame insert.
8. Repeat steps 5-7 to install second panel.



Part 4: Adjusting the Height

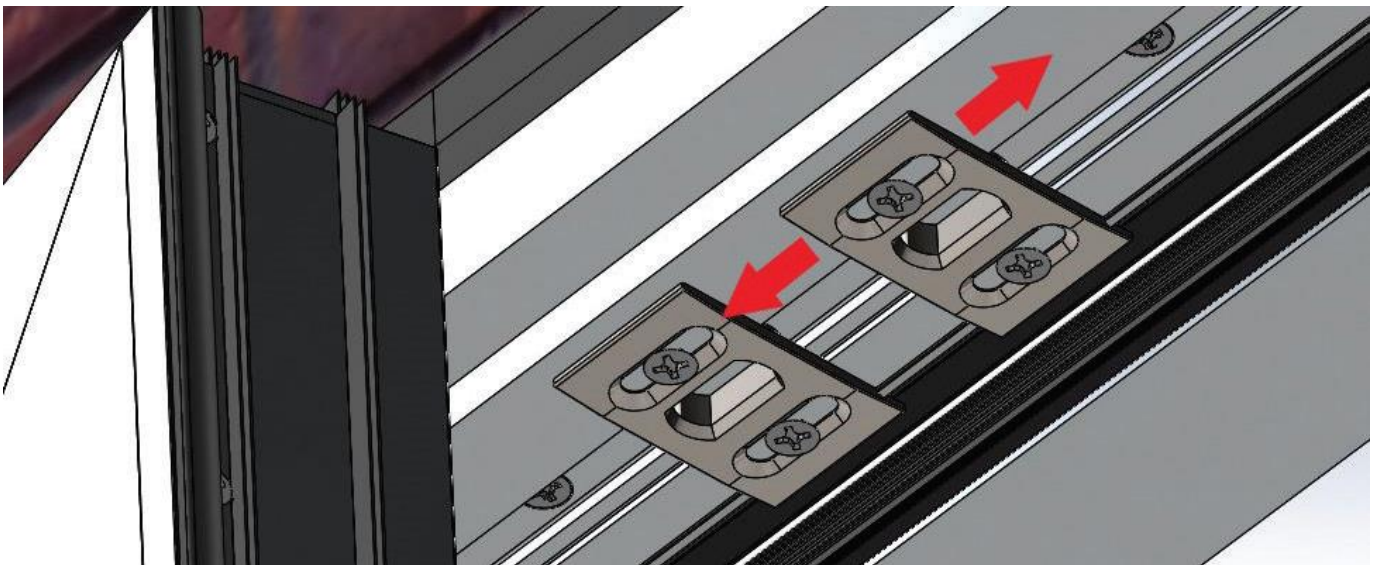
1. Once the panel is supported, measure the distance between the threshold and the panel. The distance should measure approximately 5/16". The same should be for the top of the panel to the header.
2. To make height adjustments, loosen up the frame inserts set screws (2 per hinge) using a 3mm Allen wrench to raise or lower the panel.
3. **WARNING:** Do not loosen up panel inserts unless required. To adjust hinge location at panel, remove panel from frame and make adjustments to the panel inserts using the 3mm Allen wrench, then repeat steps Part 3B – Step 5 and forward to reinstall the panel to the frame. This may require you to loosen up the frame inserts to adjust to the new panel hinge location.



Step 2

Part 5: Adjusting the Strike Plate

1. Inactive panels and some active panels are equipped with the vertical shoot bolts.
2. Close the inactive panel and engage the shoot bolts by pulling up on the handle.
3. If the shoot bolt does not align with the strike plate and does not fully engage, the strike plates need to be adjusted.
4. To adjust the strike plate, loosen up the two fasteners and move the strike plate as needed. This provides a parallel adjustment.
5. Retighten screws once adjustment is complete.



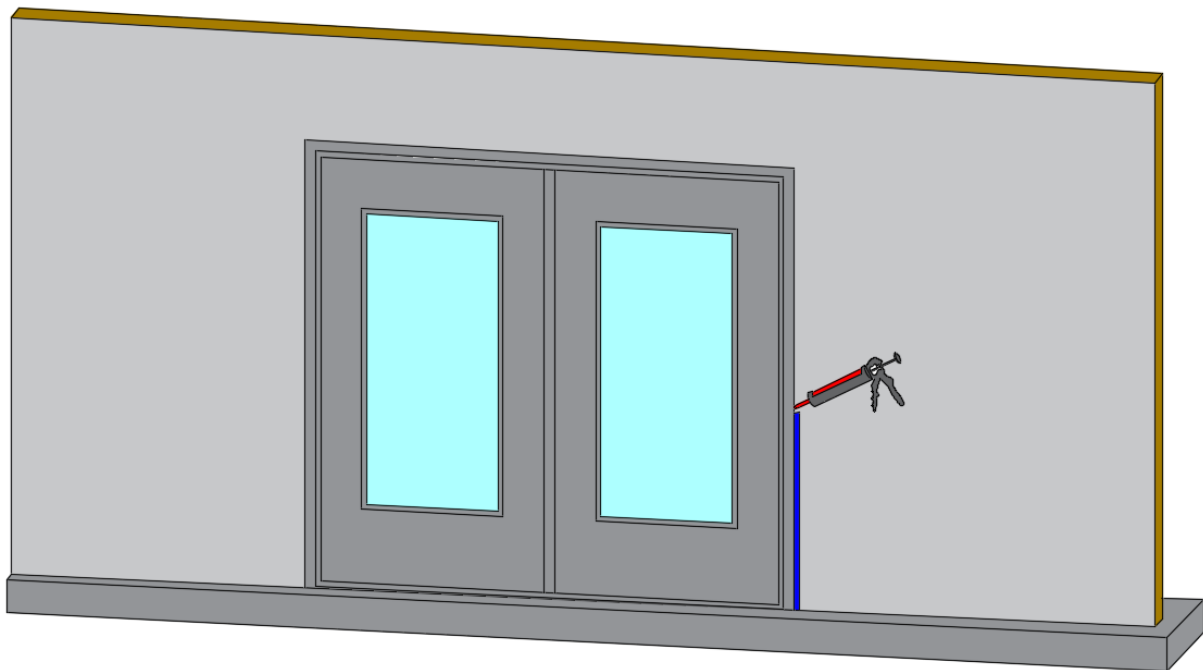
Step 4

Part 6: Completion and Adjustment

1. Make final adjustments to hinges or strike plates if necessary (refer to Parts 4 & 5)
2. Operate door unit to ensure proper operation. The panel will not operate correctly if the door is out of square, over-shimmed or over-insulated.
3. Completely seal around exterior perimeter between door frame and rough opening or wall exterior.
4. Remove all labels or shipping materials.
5. Properly finish all wood/cellular PVC interior and exterior components within 60 days of installation. See the Care and Use Guide located at www.windsorwindows.com for further details on finishing Pinnacle multi-slide doors.
6. **IMPORTANT:** Do not stain or paint any hardware or vinyl components.
7. Apply the handle set as appropriate per manufacturers' recommendations.
8. Doors are to remain closed and locked during construction to prevent site conditions from damaging and/or warping panels and frames. Allow 10-12 weeks from project completion for building temperature and humidity levels to stabilize and door panels to acclimate.

Part 7: System Finishing

Once all of the steps are completed and the new systems are installed, it is time to properly seal the system. We recommend that all finish work be completed by a General Contractor to fully seal and close the openings.



If you have any questions regarding your Windsor Windows, please contact Windsor Windows & Doors directly at 1-800-218-6186. Or you can visit us online at www.windsorwindows.com, where you will find helpful information as well as our Care and Use Guides, which will to assist you in preserving your windows and patio doors. While you are at our site, you can also complete and submit the form on the Contact page, and one of our window specialists will promptly answer your question.

Care and Use

For information about the care and use of your Windsor products, please visit the www.windsorwindows.com/support, and click “Warranty, Care, & Installation,” where you find a link to our Care and Use Guide. Or contact your local independent Windsor distributor and ask for a copy of the Care and Use Guide, which contains information on finishing, cleaning,

what to look for during yearly inspections, general maintenance tips, sash/panel adjustment, sash/panel removal, screen removal and information on condensation. You should inspect your windows or doors annually.

Warranties

You can find a copy of our current Warranty at the website, under the “Support” tab. If you have Windsor products that are older, please contact Windsor at 1-800-218-6186, and we will provide a copy of the applicable warranty.